



# SERVICES CATALOGUE

KEEPING HISTORY ALIVE





\*CONSERVATION LAB INSTALLED BY EXPM AT MOHAMMED BIN RASHID LIBRARY (DUBAI)

## "KEEPING HISTORY ALIVE"

As a company, Expm is committed to preserving the world's cultural heritage in all its forms. From ancient paper manuscripts to modern books, from historical artifacts to timeless paintings, we believe that these objects hold invaluable information about the past and provide a crucial connection to our cultural identity.

At Expm, we understand the fragility of these cultural treasures and the need to care for them in order to keep them safe for future generations. That's why we have dedicated ourselves to collecting, cataloging, and preserving these important cultural resources.

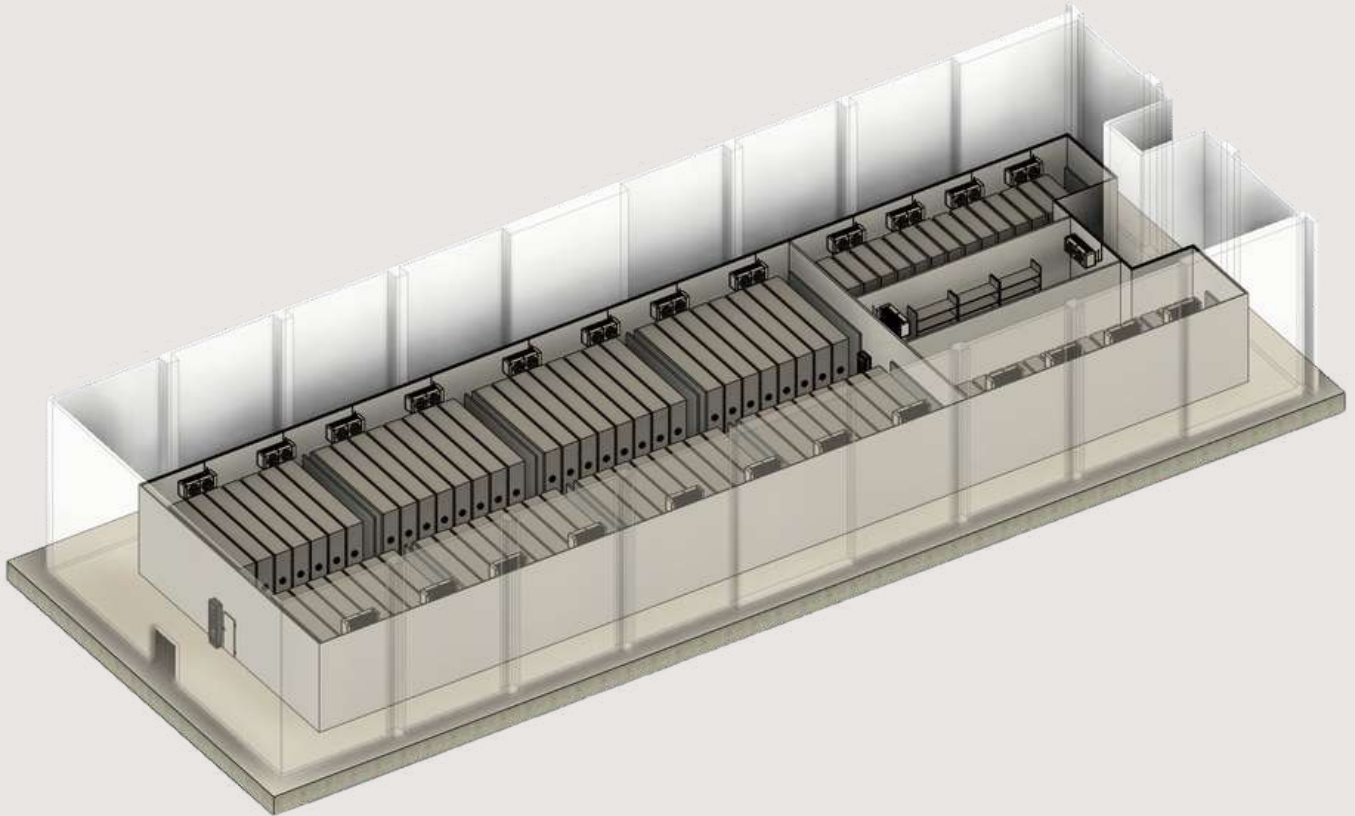
Through our various programs and initiatives, we work to make these cultural treasures available for study, appreciation, and enjoyment. We also strive to educate the public about the importance of preserving cultural heritage and the ways in which they can get involved in this important work.

As a company, we are committed to carrying out our mission and working towards a future in which the cultural heritage of the world is protected and celebrated for all to enjoy. We hope that you will join us in this important mission and support our efforts to preserve the cultural heritage of the world.



# PROJECT AND DESIGN

Efficiency, safety and quality as top priorities



Projecting and planning for a conservation lab involves a number of different steps and considerations. The first step is typically to conduct a needs assessment to determine what types of artworks and collections will be treated in the lab, and what specific needs those materials have in terms of preservation and conservation. This information is then used to create the design of the lab itself, including the layout, equipment, and materials used.

Once the lab design is in place, a project plan is developed that outlines the specific tasks that need to be completed, along with timelines and budgets. This plan will take into account all of the factors that need to be considered during the construction and outfitting of the lab, including permits, zoning, safety and infrastructure requirements.

In addition to the physical construction of the lab, the project plan will also include provisions for staff training, equipment purchasing, plus setting up procedures for the conservation and preservation of artworks and collections. It is also important to establish a system for monitoring the lab's performance and to make adjustments as needed to ensure that the lab is operating effectively and efficiently.



# SETTING-UP CONSERVATION LABS

Turn-key solutions



We offer a comprehensive technical and logistics support package, dedicated to setting up of laboratories for conservation and preservation of cultural heritage artefacts, including all stages of the development process.

Design, assembly, equipment installation, staff training and after sales assistance are all part of our offer, covering all what is needed to get a new Collection Care space up and running.

This is an integrated service including equipment selection, planning and technical support, determined by the nature, dimension and specification of the facilities to be designed.

Our bespoke lab projects are available internationally. We can help you creating new facilities from scratch or upgrade and expand existing ones.

We offer:

- Specialized conservation equipment;
- Laboratory grade resistant furniture;
- Customized solutions for lab design;
- Establishing Health and Safety protocols;
- Continued support;
- Independently of your location and type of collection, we can help your institution or company developing a world class facility for heritage preservation.



# CONSERVATORS AT YOUR DISPOSAL

Interventive Conservation projects



Our conservation teams handle small and large projects of all sizes, working with a wide range of artifacts and collection objects.

We can find stabilization treatments for challenging condition problems, using the principles of minimum intervention and applying reversible and archival grade materials only.

Treatments offered take into consideration the item's vulnerability and material characteristics, keeping in mind usage and current access needs.

## **Our conservators can help with:**

- Preparation for Loans and Exhibitions
- Full conservation treatment - for objects on storage, exhibition or loans
- Remedial conservation treatments
- Large scale and oversized items
- Stabilization treatments for digitization projects

On top of dedicated conservation expertise, EXPM can supply all materials and/or equipment to complete the project, offering a full package, including handling all the project's logistic aspects.



# COLLECTION VALUATION ASSISTANCE

Ensure what your paying is the real value of the object



Request our Collection Valuation Assistance service for:

- Assessing the value of a collection of object, such as artwork, antiques, collectibles, etc. based on market trends research, auction results, and other relevant data to determine the value of objects
- Further research on an object's provenance, background and authenticity
- Advice on future acquisitions, based on object condition and associated maintenance costs
- Have findings and provenance documented in a clear and organized manner
- Staying current with industry developments and market conditions to maintain accurate valuations.
- Coordinating with other professionals, such as appraisers, auction houses, and museum curators, as needed.

# ANOXIA DISINFESTATION AS A SERVICE

Non-toxic and environmentally friendly method for disinfestation



\*ANOXIA BUBBLES DONE BY EXPM AT MUSEU DOS COCHES - PORTUGAL

Ecological, user-friendly disinfestation. The method has no harmful secondary effect on objects that are treated nor does it constitute any health risk for operators and users.

Inert gas is used, usually nitrogen, which causes insect death by asphyxiation and dehydration. EXPM inert gas bubbles provide a made-to-measure ecological, non-toxic solution for occasional needs to disinfest documents or objects.

This technique allows local treatment to be carried out at places where documents and collections are stored, eliminating security risks and the integrity of the material, while also allowing objects of various shapes and sizes to be treated with the same efficiency.



\*ANOXIA BUBBLE DONE AT MUSEU DE SERRALVES TO A CHOCOLATE ESCULTURE - PORTUGAL

# DISASTER PREPAREDNESS

EXPM available in any SOS situation



Protection for collections and impact mitigation, in case of collection exposure to harmful circumstances.

This can include a combination of surveying, procedure implementation and team training. We can design a customized disaster response method, to suit the collections being protect, or give general training for the most common emergencies that affect cultural property, such as flood and fire incidents.

Our holistic approach evaluates risks to the collection and seeks solutions that accommodate for a range of circumstances, creating a tailored response mechanism to emergencies. We aim for prevention and focus on hazard management, while also offering preparation for dealing with disaster itself.

- Facility's survey and troubleshooting
- Guidelines for disaster handling and collection object salvaging
- Team training sessions and skills building
- Prioritization of intervention areas
- Threat identification and mitigation

Our team can also participate in emergency disaster response, offering conservation advice and salvaging collection items, particularly for large scale incidents that require major intervention and good team coordination.



# COLLECTION ASSESSMENT

Evaluation of the condition of a Collection



Collection consultancy for the evaluation of cultural heritage is a specialized service that helps institutions and organizations assess, preserve, and manage their cultural heritage collections.

The process begins with an initial assessment of the collection, during which the consultant evaluates the condition and preservation needs of the objects, detecting ongoing damage and existing hazards, reviewing the collection's current storage and display conditions, making recommendations for improvement.

Based on the findings of the initial assessment, a collection management plan can be developed, outlining the steps that need to be taken to preserve and protect the collection. This may include recommendations for conservation treatments, storage upgrades, and changes to the display or storage environment.

In addition to providing recommendations for the care and management of the collection, EXPM may also assist with other aspects of collection management, such as cataloging and documentation, insurance and risk management, and collections policies and procedures.

Collection consultancy can be a valuable service for institutions and organizations, as it helps ensure that their collections are properly cared for and preserved for future generations to enjoy and learn from. It can also be helpful for the institutions to comply with regulations and guidelines for the preservation and protection of cultural heritage.

# INTEGRATED PEST MANAGEMENT

Continuous IPM program for long-term and short-term results



Integrated Pest Management (IPM) has been developed as a response to previously interventive methods of getting rid of insects and other pests in collections. It is part of collections care, and rather than focusing on eliminating active pests, it looks at effective ways of controlling their onset through monitoring and housekeeping.

Our IPM program identifies existing points of vulnerability, in terms of safeguarding the collections from pests, seeking solutions through preventive actions. IPM relies on good collection and building knowledge, identifying risks and potential pest targets, dealing with threats through prevention and using the environment to discourage attack.

- > Detection of areas at risk
- > Trap installation
- > Preventive measures to stop pest attack
- > Establishing a continuous IPM program for long-term and short-term results

# **DIGITIZATION**

Digitization is a valuable preservation tool



EXPM LTD provides digitization for archival documents, books and microfilm. Digitization is a valuable preservation tool, creating digital records for general use and condition monitoring, reducing physical handling of collection material while safeguarding information.

Our services are performed as a way of optimizing information in terms of space, quality and ease of access according to needs:

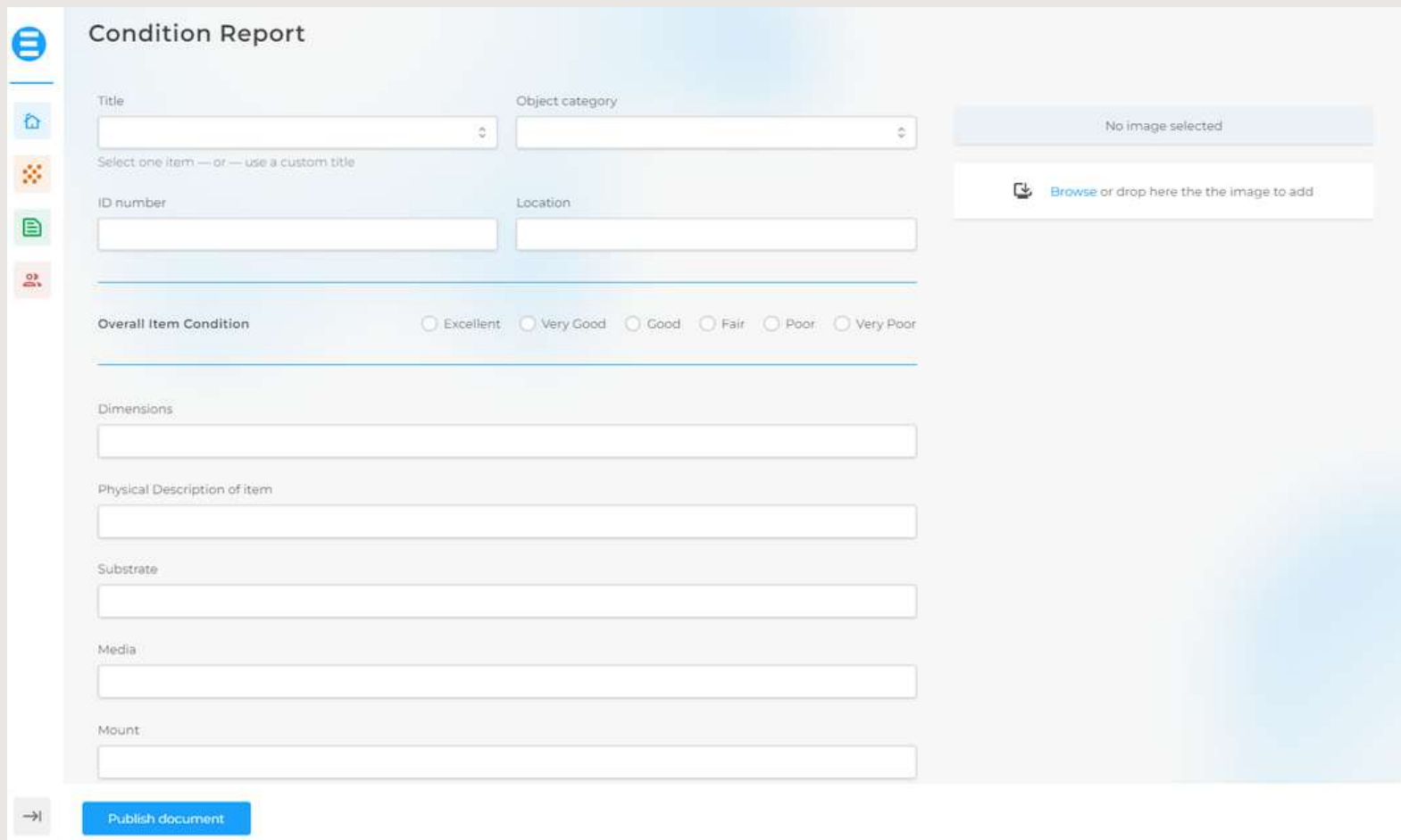
- > Use of the latest technology
- > High resolution imaging with a comprehensive and customizable metadata
- > Careful handling of collection materials, according to conservation standards
- > Digital solutions for projects of any scale and size

We can also offer guidance in terms of the acquisition of digitization technologies, for organizations that currently seek to establish in-house scanning and digitization facilities. Our advice encompasses selecting suitable equipment according to format needs, plus support with platform choice, ensuring digital assets are easily searchable and stable in the long term. In terms of microfilm digitization, we can offer the additional service of creating analog surrogates as means of creating preservation copies for existing material.



# CONDITION REPORTS

An essential tool for object examination



The screenshot shows the 'Condition Report' form in the EXPM app. On the left is a vertical sidebar with icons for a menu, home, a grid of colored squares, a document, and a group of people. The form itself has a light blue header with the title 'Condition Report'. Below this, there are several input fields: 'Title' (with a dropdown arrow), 'Object category' (with a dropdown arrow), 'ID number', and 'Location'. A note below the title field says 'Select one item — or — use a custom title'. To the right of these fields is a box that says 'No image selected'. Below the 'ID number' and 'Location' fields is a row of radio buttons for 'Overall Item Condition' with options: Excellent, Very Good, Good, Fair, Poor, and Very Poor. Below this are five more input fields labeled 'Dimensions', 'Physical Description of item', 'Substrate', 'Media', and 'Mount'. At the bottom left of the form is a blue button labeled 'Publish document'.

## EXPM APP

Introducing the Conservation and Preservation Laboratories Management app, designed to streamline the management of conservation and preservation laboratories. This app is perfect for professionals in the field of cultural heritage, museum and archives management, and other related industries.

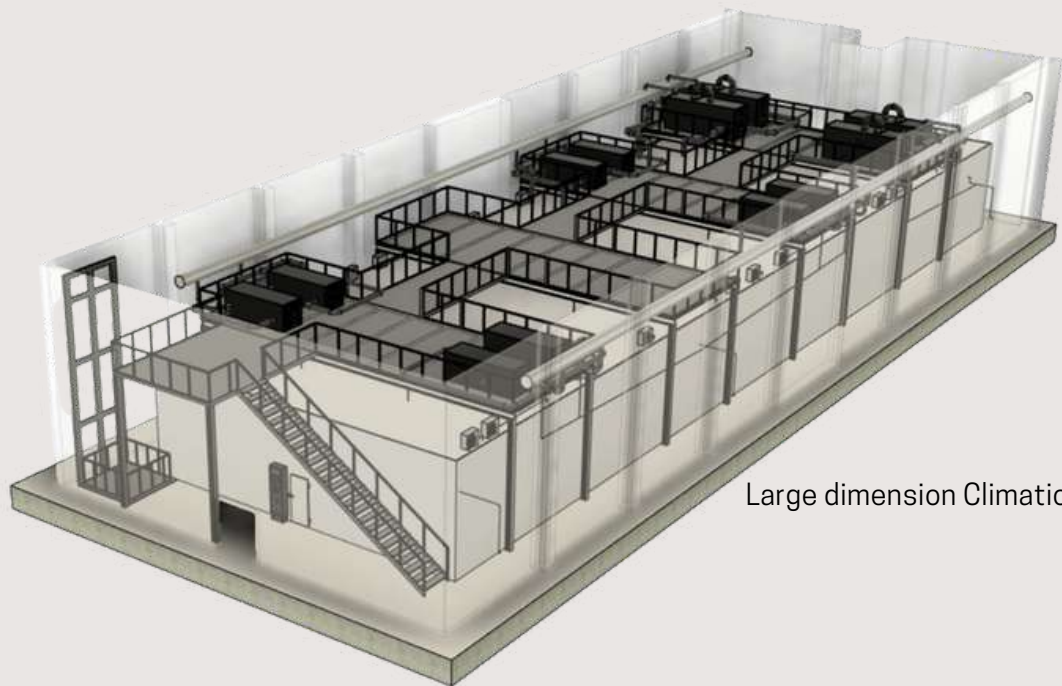
## CONDITION REPORTS

An essential tool for object examination, condition reports comprise information with multiple applications, from condition monitoring, to insurance and appraisals. Record any damage or change in condition through accessible visual documentation with descriptive data, for single objects or groups of items.

- > Impartial consultation during new acquisitions
- > Examination of outbound and returning loans, adding visual evidence for insurance claims
- > Monitorization of objects featuring in temporary exhibitions
- > Assessment during travelling displays

### What is included in a condition report?

- > Object description (Including details on materiality, manufacture and creation)
- > Overall summary (Detailing condition, described in an accessible, user-friendly way)
- > Visual annotated documentation
- > Location of existing damage, in an intuitive manner
- > Collection care recommendations (Such as requirements for storage, transport and display)
- > Conclusive support (Know if an item is safe to travel, needing major conservation interventions or any other factors that can impact acquisition)



Large dimension Climatic Chamber

Standard dimension  
Climatic Chamber



## CLIMATIC CHAMBERS

Preventive conservation relies on maintaining a suitable environment, promoting proper care through good handling practices, focused on staff and user education. Along with good quality storage and housing, these factors have a lasting, positive impact on the preservation of a collection. It is crucial to understand that only cold storage can provide long-term access to certain materials.

Without cold storage, temperature-sensitive collection objects will deteriorate in a matter of a few decades; with cold storage they can remain unchanged for many centuries. It is essential to know the type of collection objects that are intended to be stored, as climatic conditions required depend on the type of media and material, as described in the tables below.

# EQUIPMENT DESIGN

Custome made equipment for different solutions



EXPM Chamber



EXPM Portable Chamber



EXPM Bubble Kit

## ANOXIA CHAMBERS AND BUBBLE KITS

An ecological, user-friendly, disinfestations method. This process has no noxious secondary effects on the object to be treated, nor does it involve any risk to the health of operators or users. It uses an inert gas, usually nitrogen, which causes death of the insects by asphyxia and dehydration. Anoxia eliminates the investing insects at any stage of their development – eggs, larva or adults.

Equipment designed for continuous and systematic treatment of documents and other archival objects. The equipment has been designed to deal with books, documents and works of art. This system allows the parameters of the atmosphere inside the chamber or bubble to be set and controlled, providing an appropriate, low oxygen content atmosphere for disinfestations purposes. Intuitive, automated operating and control mechanisms.



# REFERENCES

A small reference list with recent interventions:

USA- US Army Museum/ Archives- Carlisle

Mexico - National Archives- Mexico City

Indonesia- Municipal Archives - Djakarta

Singapore- National Archives

Egypt- Bibliotheka Alexandrina

Vietnam - National Archives and Ministry Archives

China - ZheijangCulture Communication Co.,Ltd

India - Roja Muthiah Research Library

Portugal- National Archives

Madeira Island - Regional Archives

Brasil - FAPESP - São Paulo

Greece- Stavros Niarchos Foundation

Abu Dhabi - National Archives

Abu Dhabi - Zaed National Museum

Dubai - Mohammed Bin Rashid Library

Hong Kong (China SAR) - M+ Museum

Laos - National Archive

And more...





#### PORTUGAL OFFICE

Rua da carreira nº 350 Armazém A 10  
2645-467 Alcabideche - Portugal  
+351 214661910  
[www.expm.com.pt](http://www.expm.com.pt)  
[www.expmstore.com](http://www.expmstore.com)

#### UAE OFFICE

Adress: P.O.BOX:53474 Dubai, UAE  
+971 50 976 7758  
[www.expm.ae](http://www.expm.ae)